

A man with a full brown beard and mustache, wearing a red, white, and blue plaid shirt, stands with his arms crossed. He is holding a hammer with a red handle and a silver head. The hammer has the 'suki' logo on the handle. The background is a solid grey.

suki

**YOUR SOLUTION FROM
A SINGLE SOURCE**

Great for retail, great for trade

suki

► Hardware



► Hand tools



► Chains & Ropes



► Furniture fittings



► Wood connectors



STRONG BRAND FOR GOOD SALES

suki is the brand for retail and trade. Our constantly expanding range is about quality, ease of use and evolving product innovation. It comprises 35.000 items – available in any combination and scale and individually tailored to your space and your requirements.

Who else does that?

YOUR BENEFITS WITH SUKI:

- ▶ everything your customers need from a single source
- ▶ great quality, tested in Germany
- ▶ selectable product range can be tailored to your needs
- ▶ customised and optimised displays
- ▶ unbeatable international expertise
- ▶ regular updates to the range



EXCELLENT QUALITY

Designed to meet the needs of tradesmen and appealing to customers through their high quality, suki products are thoroughly tested and meet all the relevant standards, even exceeding them in many respects. All suki products meet tradesmen requirements. All products are subjected to the EU's Construction Products Regulation are certified and bear the CE mark.

A good decision.

ONE BRAND – THREE OPTIONS



► suki performance

Completing the portfolio, suki performance stands for uncompromising quality, design and product performance.



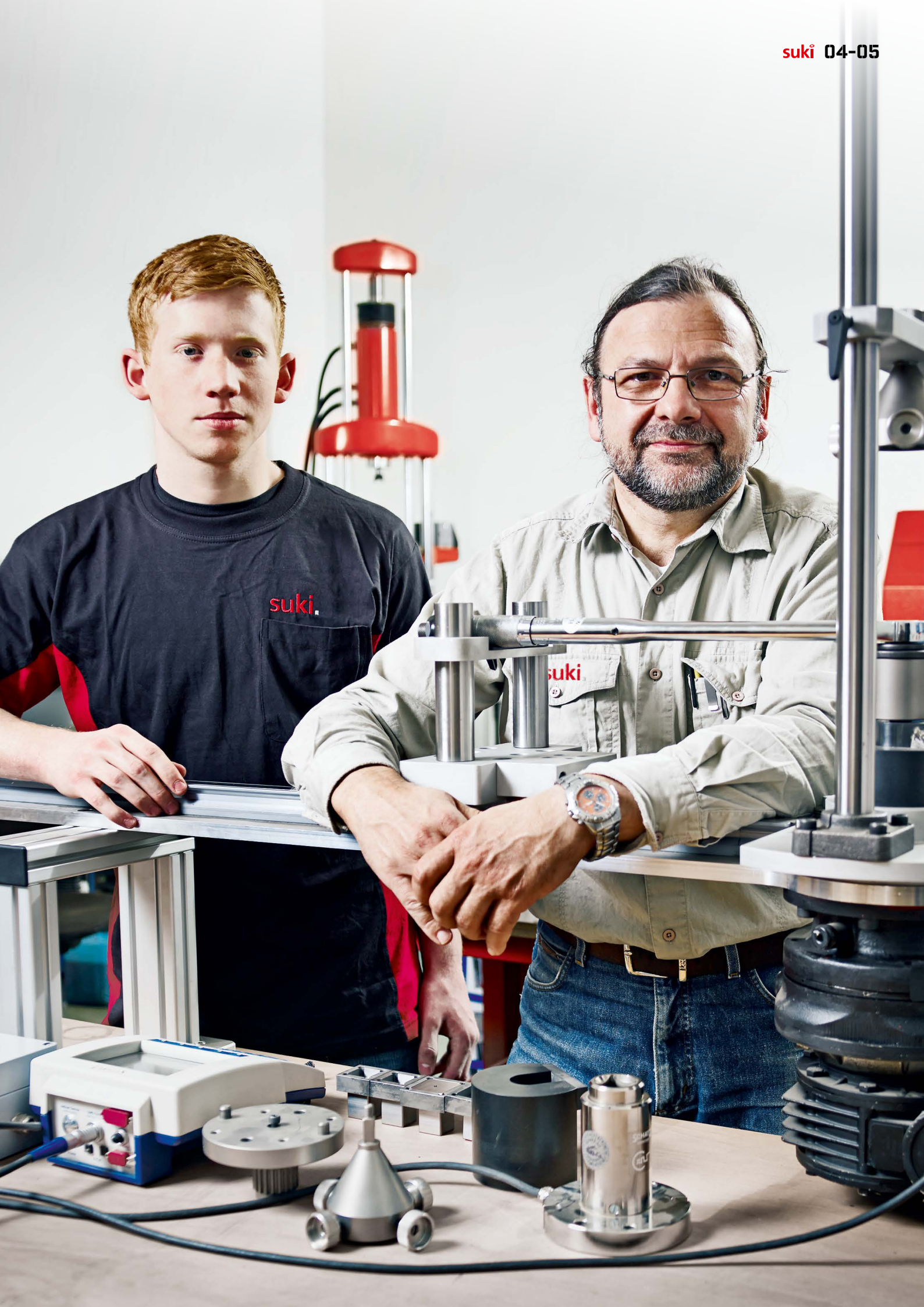
► suki

suki is the brand for all your DIY and trade requirements. Its five product ranges stand for great quality, ease of use and innovation.



► suki Top Deal

suki Top Deal offers good quality for promotional goods and entry-level products.



SUKI

HARDWARE

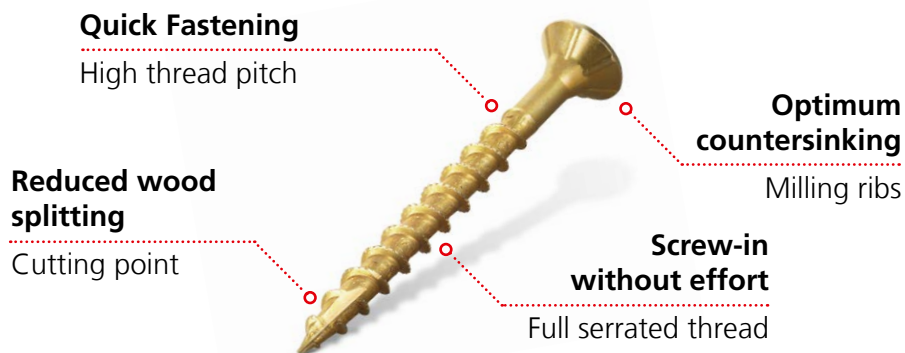
As the market leader for DIY hardware in Germany, suki not only provides the widest and deepest range of products in the industry but also incredible variety. With 20.000 articles in 45 different types of space-saving packaging, we can make the most of your shelf space. And, with a total of 480 product groups, provide you with the largest selection of solutions for all your customers' specific fastening problems.

Only suki. does that.



TOP PRODUCT – SUKI PERFORMANCE UNIVERSAL WOOD SCREW

Premium screws for fast, time-saving fixing with minimal effort and reduced splitting.



► Flexible packaging concept

Thanks to optimised packaging types and sizes per product group, suki offers you the greatest possible flexibility when it comes to putting together your hardware display. Colour-coded packaging shows consumers the scope of application. Pictograms overcome the language barrier and clear dimensions on the label leave every customer rest assured they have found the right product.

Custom solutions made by suki.



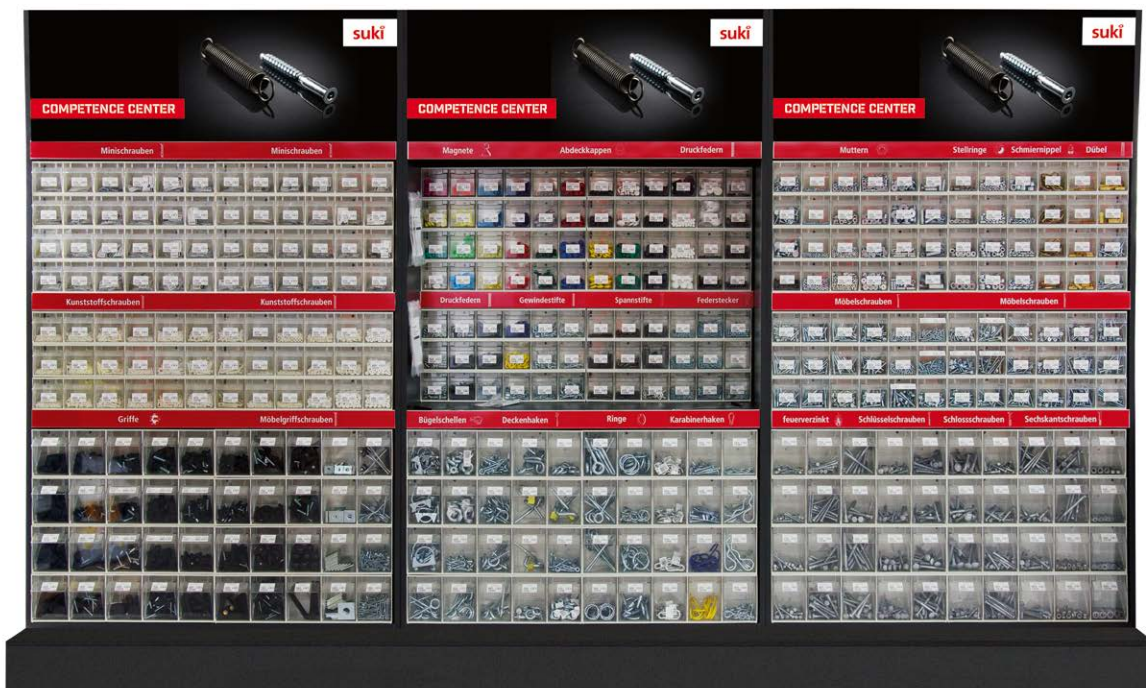


► Stainless Steel Competence Centre

For outdoor applications, the particularly strong suki Stainless Steel Competence Centre offers a much larger A4 assortment than others. We have every solution. And make sure that your customers find them easily. High-quality and good for sales.

► Hardware Competence Centre

An attention-grabbing shop-in-shop concept with an extensive range of hardware for special applications. A clear view of the products and an excellent guidance system lead customers to the solution they are looking for, thus ensuring maximum churn.





▶ Tapping screws & Drilling screws



▶ Stainless steel A2



▶ Stainless steel A4



▶ Hooks & Eyes



▶ Metric screws



▶ Nails and pins



▶ Special fasteners



▶ Wood screws



▶ Universal wood screws

EVERY DISPLAY IS ITS OWN CONCEPT

With suki products come experienced experts who understand product complexity and the world of hardware in detail. This strength gets applied to every single suki display – you just tell us how much space you've got, what your customers and local competition are like. And we define the product composition, packaging sizes and display design so that it looks really good. We know the trends and understand consumer behaviour, advise you on your product range and help you restructure your hardware section efficiently.

Everything what is making you stronger in the competition.



suki PP box

Solid packaging solution for storage with a large, informative label.



Space-saving illuminated info boards
for best product information.

Product blocks make recognising and
finding the right products easier.

Different types of packaging such as
hanging boxes, sliding boxes, big packs
and loose goods on one display ensure we
always appeal to the consumer's taste.



Double info boards and large
easy-to-read font provide more
information about product groups
and sizes.

SUKI

HAND TOOLS

suki hand tools meet all the requirements of DIY and retail trade customers. A great value for money. With 2.600 items from a single source, a well thought-out range, clever packaging and top presentation.

What more could you want?



► Packaging that sells

Customers can touch and try out suki tools. The products are secured in a theft-proof manner and dangerous tools such as saws and chisels come with protectors against injury and damage. Key information such as product sizes, GS markings or standards is immediately obvious. Areas of application, safety and operating instructions are explained in an internationally understandable way by means of pictograms and brief multi-language instructions. To help the decision-making process further products made in Germany are marked "Made in Germany".



► Sits nicely in the hand

suki hand tools meet and exceed all legal standards and offer better quality than comparable tools. A difference that pays off.





► Screwdrivers



► Hammers & Chisels



► Wrenches, Ratchets & Sockets



► Chisels



► Pliers



► Masonry tools



► Cutting tools



► Axes & Hatchets



suki 14-15

► Tile working tools



► Safety wear



► Construction tools



► Garden tools



► Saws



► Clamps



► Measuring tools

A INDIVIDUAL DISPLAY – TO MEET ALL NEEDS

Whether installed in a DIY or store for tradesmen, the suki Tool display offers your customers an array of individually arranged products. With everything fitting together nicely, presentations are well thought-out, offer a fresh look, a tailored selection and clear guidance. Easy to easy shop.

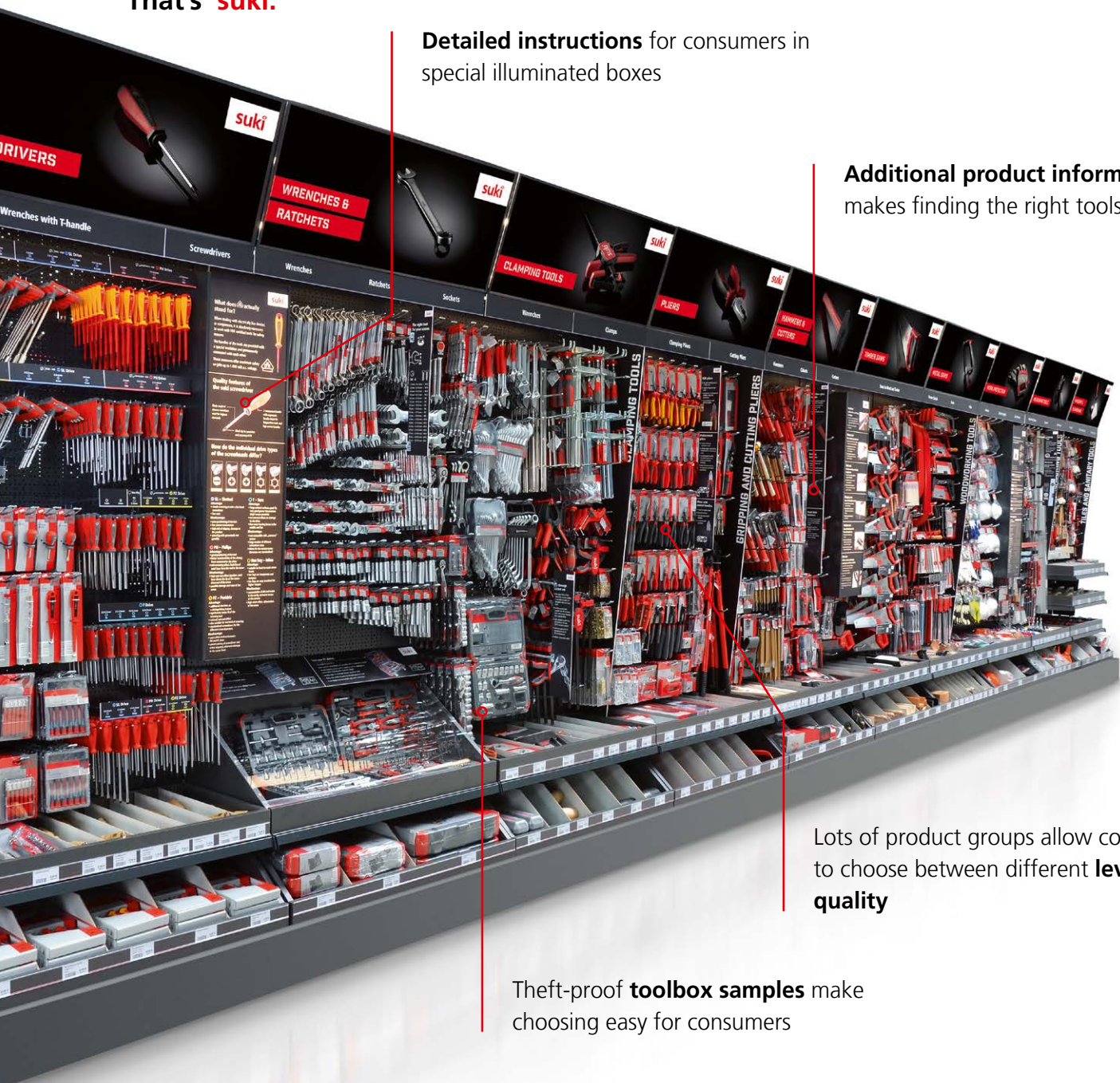
That's **suki**.

Detailed instructions for consumers in special illuminated boxes

Additional product information makes finding the right tools easy

Lots of product groups allow consumers to choose between different **levels of quality**

Theft-proof **toolbox samples** make choosing easy for consumers



JUST WHERE YOU NEED IT

We design your display to precisely fit the space at your disposal. It will always contain at least 15 product groups – ensuring minimal capital investment and maximum product churn.

Additional range and special items from
brand-name manufacturers

Huge selection of trowels and floats
in different sizes and materials

Special selection of tools
for professional tilers and
bricklayers



Lots of specialist items for gardening,
landscaping, roofing or building site
safety and protection

SUKI

FURNITURE FITTINGS

With nine product groups, suki offers everything DIYers and professionals need to make and renovate furniture and furnishings. We offer a wide range of good-quality products tested according to furniture industry standards.

Solutions for every project.





► Shelf supports



► Screw peg hinges



► Wardrobe rails & Accessories



► Catches



► Sliding door fittings



► Locks



► Furniture & Connecting fittings



► Drawer runners



► Hinges

THAT'S HOW A DISPLAY MUST LOOK LIKE

Tidy, logically structured and clearly presented. Every product is clearly recognisable in its packaging, a colour coding system points your customers in the right direction and product samples provide them with all the sales-relevant information.

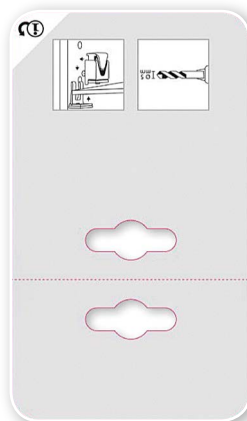
ALL THE INSTRUCTIONS ON THE PACKAGING

A clear advantage over the competition: Your customer sees the entire product in the packaging and finds all the information they need to make a purchase – including German language text or easily understandable pictograms. More complex products come with multi-language assembly instructions and, if necessary, a drilling template.

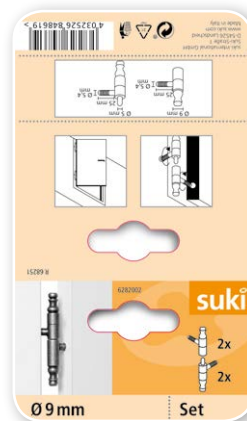
back



front



inside



International label



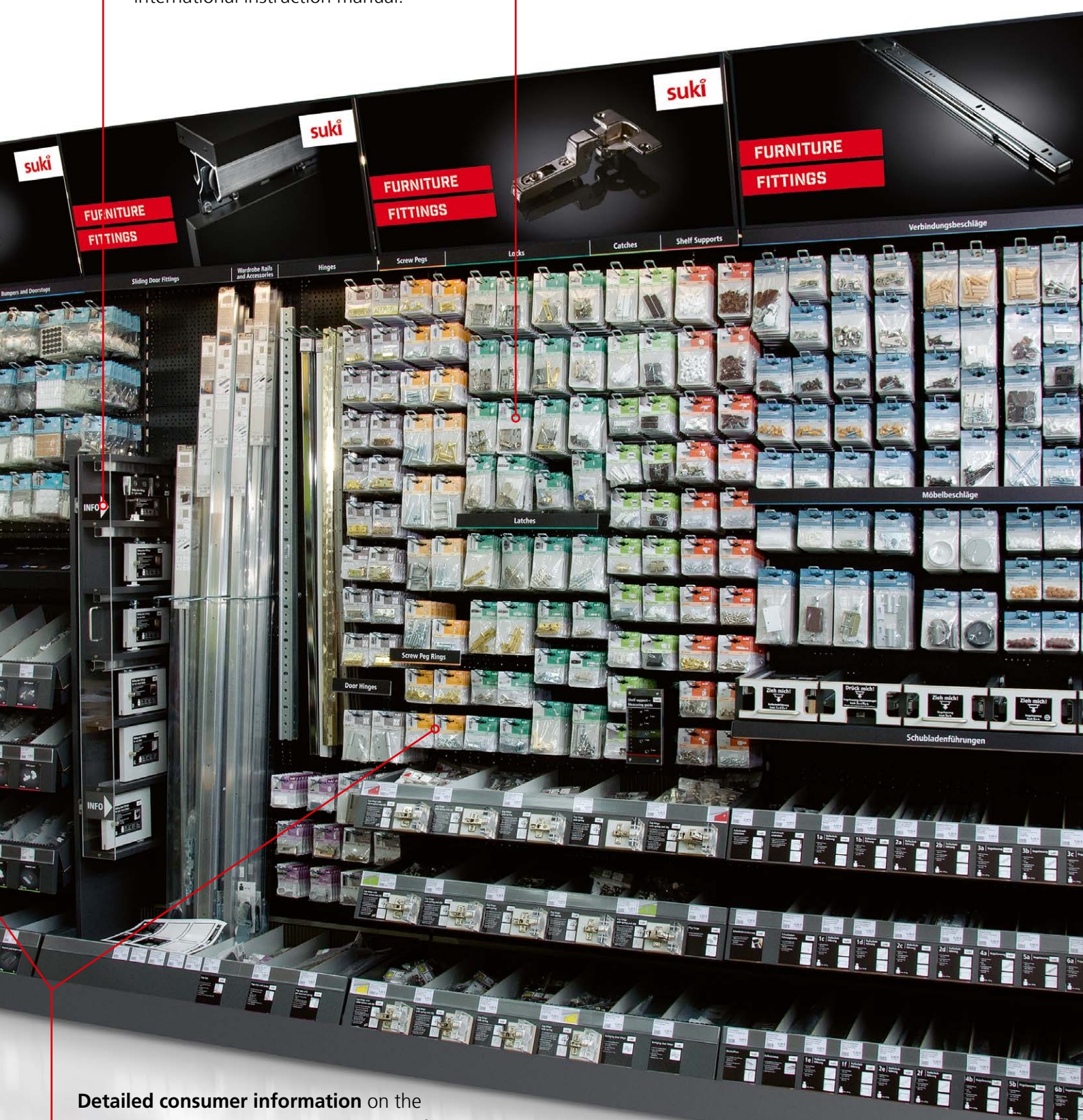
The right fit for every market:

Packaging variants without header cards where space is limited or for price-sensitive sales channels.



Live demos of technically involved products – and an international instruction manual.

Intuitive colour-coded packaging



Detailed consumer information on the packaging or, when displayed on the shelf, with shelf information.

SUKI

CHAINS & ROPES

The excellent suki range of chains & ropes bundles years of experience from across Europe into an optimally composed product range that only we we can supply in Europe. This includes standard and special articles with a large selection of matching accessories and many clever packaging variants.

An international range – tailored to regional markets.





► Wires



► Chains



► Cable Wires



► Ropes



► Load securing



► Accessories

CHAINS & ROPES

MADE EASY

Benefit from suki efficient POS concept for chains & ropes. Thanks to innovative product carriers, we make it easier for you to maintain your product presentation. There is just one modular system for a wide variety of shelf types and an easily identifiable colour coding system on the packaging distinguishes the product groups. Instructional elements provide your customers with the right guidance.



Self-service packaging for more sales

Maximising customer convenience, suki self-service packaging for chains and ropes guarantees the best visibility and turns your bestseller into a practical take-away item.



Self-adhesive flag labels

only adhere at one end of the label and keep products free of adhesive residues and save space.



Bobbins with two EAN codes

enable the sale of products on a per metre or piece by bobbin basis – perfect for tradesmen retail.



Harmonized 75 mm and 200 mm **diameter bobbins** form the basis for optimised display planning and a harmonious display.

Small bobbins in the cut cases save space and do not require any special carriers and guarantee availability by low inventories at once.

Heavy-duty chains in buckets with a practical perforated opening in the lid – the clever suki idea for safe transport and damage-free packaging plus ease of use at the POS.



Products are depicted on **tip-out boxes** for easy recognition.

SUKI

WOOD CONNECTORS

The suki range of wood connectors offers in widths and depths a varied but perfectly matched solution for construction, garden and household. We meet country-specific needs with dedicated products such as black powder-coated door and gate fittings, for example. No matter what your customers need, we can implement any product.

That's suki flexibility.



ALL SUKI WOOD
CONNECTORS
ARE FREE OF
CHROMIUM VI



► Joist hangers & Post supports



suki 26-27

► Latches & Bolts



► Hinges & Metal straps



► Black coated connectors



► Furniture & Construction brackets



► Brackets & Nailing plates



► Fence fittings



GREAT DISPLAY, GREAT GUIDANCE

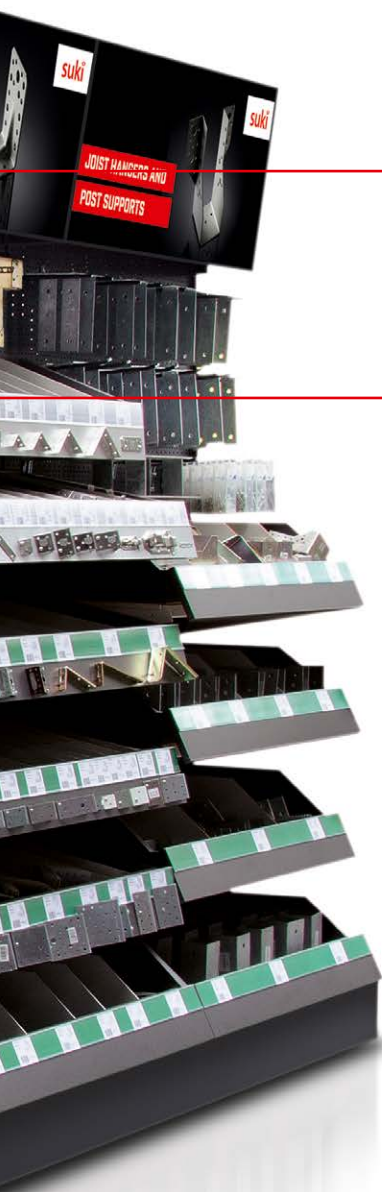




All the information at a glance

Large labels with the relevant item data provide your customers with detailed information about each product:

- ▶ Article description
- ▶ Dimensions
- ▶ Material thickness
- ▶ Type of material
- ▶ CE marking



Self-explanatory **live demonstrations** for each product group show the DIYer which product is best suited to their project.

Samples on the shelves show your customers where they can find the product they need.

MAGNODUR- THE UNIQUE WOOD CONNECTOR

MAGNO|DUR

MAGNODUR is suki's extensive range of high corrosion-proof, premium products for wood connecting that provide extreme durability even when used outside. Built to last. Good for sales. Your suki partner will be happy to advise you.

A PARTNER, YOU CAN RELY ON

6 good reasons to work with suki.



ONE SOURCE FOR SIX RANGES



**NATURAL BORN SPACE OPTIMISATION -
A REFRESHING WAY TO DISPLAY**



**MAKES SURE THAT IT WORKS -
LOGISTICS FLOW WITH US**



**STRONG BRANDS -
FOR YOUR SUCCESS**



**EUROPE-WIDE SALES NETWORK -
GLOBAL STRENGTH WITH LOCAL PRESENCE**



**MADE FOR YOUR TRADE -
CRAFTSMEN QUALITY**





suki.

suki.international GmbH

Suki-Straße 1

D-54526 Landscheid

Telefon: +49 6575 71-0

Fax: +49 6575 71-100

E-Mail: info@suki.com

www.suki.com